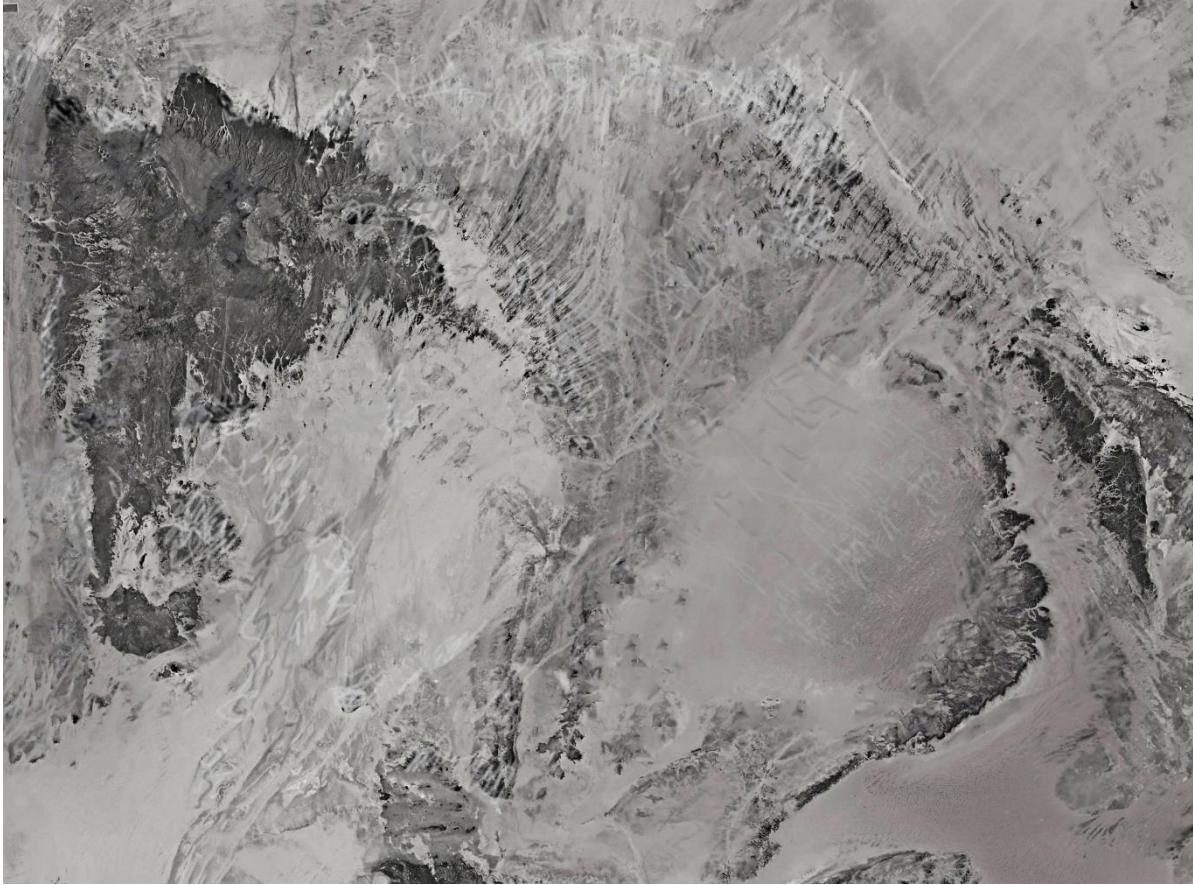


Don's work includes elements of photography, sculpture, digital and conventional drawing and painting.

His main educational background is in Engineering (Curtin and UWA). Post graduate studies include Extractive Metallurgy (OUA), Education (Curtin), Religion/Science and Philosophy (EDX - MIT, and UT (Austin)), Chinese philosophy (Harvard). Art studies have been through various entities such as TAFE, Edith Cowan and Lois Paris.

It is the interrelation of philosophy, ecology, and religion (pantheism/panpsychism) which make up the core of Don's work.



1. Grey Wolf in Winter
2. Crow



3. Karak (Black Cockatoo)

4. Eagle



5. Boy on a horse

6. Study of a foetus (after Leonardo)